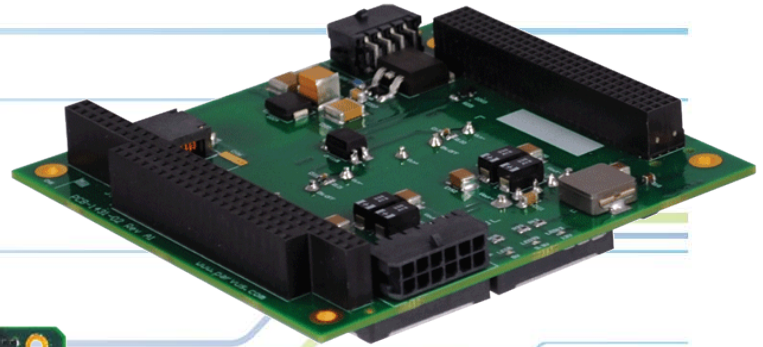


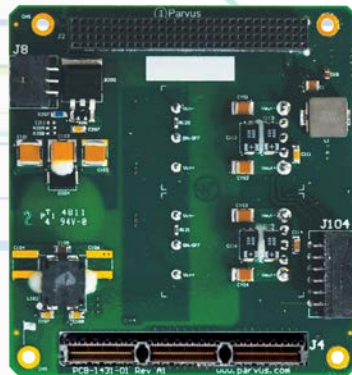
PC/104-Plus & PCI/104-Express 100W Isolated DC/DC MIL-STD-1275/704 Power Supplies

PWR-21-11 / PWR-22-11

- 100 Watt PC104+ / PCIe104 Power Supply
- MIL-STD-704F & MIL-STD-1275D Compliance
- MIL-STD-461F EMI Filter / Power Conditioning
- 18V to 36VDC Input Range
- +3V, +5V, +12V DC Output
- Extended Temperature: -40 to +85C
- MIL-STD-810G Shock/Vibe/Thermal

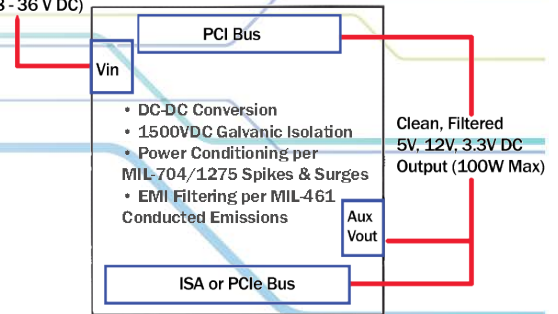


PC/104-Plus (PWR-21-11)



PCI/104-Express (PWR-22-11)

Unregulated Vehicle Battery /
Aircraft Generator Power Input
(18 - 36 V DC)



FEATURES

APPLICATIONS

- 24 / 28V DC-DC Conversion for PC/104, PC/104-Plus, PCI-104, PCIe104, PCI/104-Express and Other Small Form Factor Embedded Systems
- Compliance with MIL-STD-1275, MIL-STD-704, MIL-STD-461 Surges, Spikes, Conducted Emissions in Aerospace / Avionics / Military / Ground Vehicles \

FORM FACTOR

- PWR-21-11: PC/104-Plus (ISA + PCI)
- PWR-22-11: PCI/104-Express (PCI + PCIe)

COMPLIANCE:

- Designed to Meet MIL-STD-810G (Environmental), MIL-STD-1275D and MIL-STD-704F (Voltage Input, Surges, Spikes, Transients), MIL-STD-461F (Conducted Emissions & Susceptibility)

VOLTAGE INPUT:

- Nominal 28.0 V DC (+18V to +36VDC with Support for 250V Spike and 100V Surge per MIL-STD-1275, as well as 1500V DC Galvanic Isolation)

VOLTAGE OUTPUT:

- Up to 100 Watts: +5V @ 10A (50W Max), +3.3V @ 15A (50W Max), +12V @ 1.5A (18W Max – 12V derived from 3.3V rail)
- Optional 50 Watt 5V Only Configuration: +5V @ 10A (50W Max)

REMOTE SHUTOFF

- Remote Power on/off Shutdown Support

- Defense & Homeland Security
- Vehicle, Aircraft, Shipboard Applications

The PWR-21-11 and PWR-22-11 boards are rugged MIL-STD-1275/704 compliant DC/DC converter cards in stackable embedded PC/104-Plus (PWR-21-11) and PCI/104-Express (PWR-22-11) form factors designed for demanding power conditions experienced by embedded computing devices used onboard military ground vehicles (MIL-STD-1275D) and aircraft (MIL-STD-704F) installations. These galvanically isolated supplies provide 100 watts of combined power output (+3.3V, +5V, +12V) and come equipped with MIL-STD-461 EMI filtering and transient protections specifically designed for demanding 250V spike and 100V surge requirements under MIL-STD-1275. These boards provide power over stackable buses (PCI and ISA buses for PWR-21-11, PCI and PCIe-Express buses for PWR-22-11) as well as auxiliary power output connectors for non-PC/104 systems. They support an 18-36V DC input range for 24/28VDC applications, and typically eliminate the need for additional in-line power conditioning/EMI filtering devices in military embedded systems.

Featuring a rugged mechanical design, these small form factor (3.550" x 3.775") cards are designed to be used as the bottom module in a PC/104, PC/104-Plus, PCI-104, PCIe104, or PCI/104-Express embedded system stack, operate without any active cooling over extended temperature ranges (-40 to +85C per MIL-STD-810G), and provide resistance to high levels of shock and vibration (per MIL-STD-810G fixed wing jet, rotary aircraft, and tracked ground vehicle conditions). They are passively cooled by attaching the bottom of the card to a thermally conductive base or enclosure wall with electrically-isolated gap pad to dissipate heat. A tribute to their robustness and versatility, the PWR-21-11 and PWR-22-11 power supplies are integrated into various MIL-STD-810/1275/704/461 qualified Parvus DuraCOR mission computers, DuraNET Ethernet switches, and DuraMAR mobile IP router subsystems. These small form factor supplies are compatible with Cisco Systems' PCI-104 5915 Series Embedded Services Router (ESR) card as well as a host of embedded Single Board Computers modules on the market.

Specifications



Top View of PWR-22-11 (PCI/104-Express)



Bottom View of PWR-21-11 (PC/104-Plus)



Side View of PWR-21-11 (Note Bottom-Mount DC/DC Converter for Optimal Heatsinking)

FUNCTION	<ul style="list-style-type: none"> MIL-STD Compliant Isolated DC/DC Converter Board Converts DC Input from Vehicle Battery / Aircraft Generator to Provide Clean, Filtered Output to Size, Weight & Power (SWaP) Sensitive Embedded Systems in Mobile, Airborne, and Vehicle Applications
STANDARDS COMPLIANCE	<ul style="list-style-type: none"> PC/104-Plus (PWR-21-11) PCI/104-Express (PWR-22-11) MIL-STD-704F (Aircraft Power Transients) MIL-STD-1275D (Vehicle Power Transients) MIL-STD-461F (Conducted Emissions & Susceptibility) MIL-STD-810G (Environmental)
POWER INPUT	<ul style="list-style-type: none"> Normal Steady State Operation: 18V DC to 36V DC (28V DC Nominal) Compatible with 100V Surge / 250V Spike Conditions (per MIL-STD-1275) Connector: Molex Plug-Socket Connector
POWER OUTPUT	<ul style="list-style-type: none"> Up to 100 Watts: <ul style="list-style-type: none"> +5V @ 10A (50W Max) +3.3V @ 15A (50W Max) +12V @ 1.5A (18W Max – 12V Derived from 3.3V Rail) Connectors: <ul style="list-style-type: none"> Molex Plug-Socket Connector – Rated for Full Output Capabilities of 5V, 3.3V, 12V Rails Stacking PCI and ISA Bus Connectors on Top of Board (PWR-21-11) Stacking PCI and PCI-Express Bus Connectors on Top of Board (PWR-22-11)
VOLTAGE / LOAD PROTECTION & CONDITIONING	<ul style="list-style-type: none"> Input Protection per MIL-STD-1275D and MIL-STD-704F: Reverse Polarity, Voltage Transient, Surge (100V), Spike (250V), Reverse Polarity, EMI/RFI Filter Electrical (Galvanic) Isolation: 1500V Input to Output, 1500V Output to Case Output Protection: Short Circuit Protection, Overcurrent Protection, Overvoltage Protection In-Rush Current Limited to <10A@3ms Max
EFFICIENCY:	<ul style="list-style-type: none"> DC/DC Conversion Efficiency: Approximately 84% at Full Load
SWITCHING FREQUENCY:	<ul style="list-style-type: none"> Synchronized Switching at 350kHz for Reduced Noise and System Stress
PARD (Noise, Ripple)	<ul style="list-style-type: none"> <50 mV p-p Max (20MHz)
REMOTE ON/OFF	<ul style="list-style-type: none"> Remote Shutdown Support (Onboard Molex Connector)
STATUS INDICATION	<ul style="list-style-type: none"> Onboard Voltage Rail Status LEDs
PHYSICAL	<ul style="list-style-type: none"> Form Factor: <ul style="list-style-type: none"> PC/104-Plus (ISA and PCI Buses) – PWR-21-11-XX, Stack-thru Buses on Top Only PCI/104-Express (PCIe and PCI Buses) – PWR-22-11-XX, Stack-thru Buses on Top Only Dimensions: 3.550" x 3.775" (90x96 mm) L x W - PC/104-Plus / PCI/104-Express Compliant, except Component Height on Bottom Weight: Approx. 0.35 lbs (0.16 kg) Cooling: Passive Conductive Baseplate Cooling: Bottom-Mounted DC/DC Converter Module Should Be Mated with Thermally Conductive, Electrically-Isolated Gap Pad Against System Enclosure Wall to Dissipate Heat. Base Plate Temperature Must Stay Below 100°C (Max).
ENVIRONMENTAL	<ul style="list-style-type: none"> Designed to Meet MIL-STD-810G: <ul style="list-style-type: none"> Operating Temp: -40° to +85°C / -40° to +185°F at thermal interface (MIL-810G, Methods 501,502) Storage Temp: -55° to +100°C / -67° to 212°F at thermal interface (MIL-810G, Methods 501,502) Operating Shock: 40g, 11ms, 3 pos/neg per axis (MIL-STD-810G, Meth 516) Random Vibration: Jet-Helo-Tracked Vehicle Profile, 3 Axes, 1 Hour/Axis (MIL-810G, Method 514) Humidity: Up to 95% RH @ 40C, Non-Condensing (Qual by Analysis)
EMI / EMC	<ul style="list-style-type: none"> Designed to Meet MIL-STD-461F: <ul style="list-style-type: none"> Conducted Emissions, CE102, Power Leads, 10 KHz to 10MHz, basic curve Conducted Susceptibility, CS101, Power Leads, 30 Hz to 150 KHz, Curve 2 (28V and Below)
RELIABILITY	<ul style="list-style-type: none"> MTBF: TBD Calculated per MIL-HDBK-217F Workmanship: Assembled to IPC-A-610 Class III Workmanship No Moving Parts. No Active Cooling Required. Over-temperature Shutdown @ 100C
OPTIONS	<ul style="list-style-type: none"> Conformal Coating Special Ordered; Integrated into PC/104+ or PCI/104-Express Chassis/System
ORDERING CODES	<ul style="list-style-type: none"> PWR-21-11-01: 100W PC104+ MIL-1275/704 DC/DC Power Supply, Vout=+3.3V, 5V, 12V PWR-21-11-02: 50W PC104+ MIL-1275/704 DC/DC Power Supply, Vout=+5V only PWR-21-11-03: 50W MIL-1275/704 DC/DC Power Supply, Vout=+5V only, no bus connectors PWR-21-11-04: 100W MIL-1275/704 DC/DC Power Supply, Vout=+3.3V, 5V, 12V, no bus connectors PWR-22-11-01: 100W PCI/104-Express MIL-1275/704 DC/DC Power Supply, Vout=+3.3V, 5V, 12V PWR-22-11-02: 50W PCI/104-Express MIL-1275/704 DC/DC Power Supply, Vout=+5V

Note: The information in this document is subject to change without notice and should not be construed as a commitment by Parvus / Eurotech. While reasonable precautions have been taken, Parvus assumes no responsibility for any error that may appear in this document. All trademarks or registered trademarks are the properties of their respective companies.